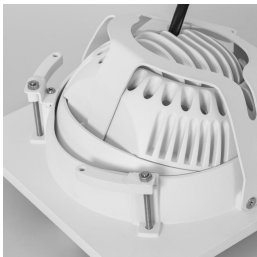




**30W Commercial Downlight**

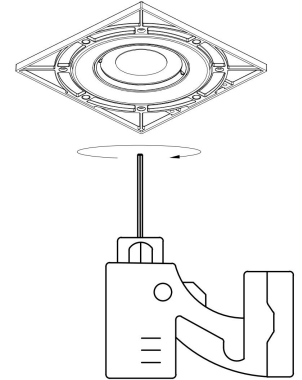
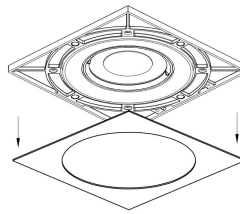
- All directional Gyro Tiltable;
- Low glare interchangeable lens;
- Interchangeable snoot & honeycomb;
- Air Dynamic heatsink;
- Screw installation;



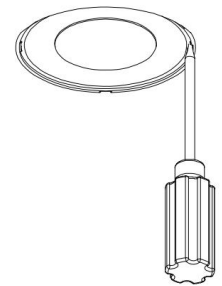
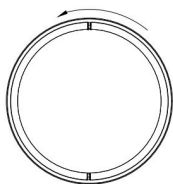
All directional tilt &  
air Dynamic heatsink;



Magnet bezel+  
Screw installation;



Interchangeable snoot &  
add on honeycomb louvre;



Low glare interchangeable lens;



## DL3685

### 30W Round Atom Downlight

#### Description

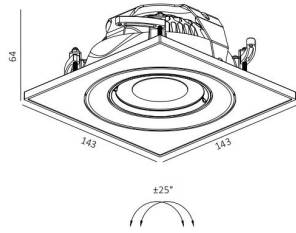
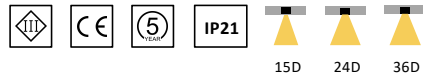
Gyro Tiltable;  
Low glare interchangeable lens;  
Air Dynamic heatsink;  
Screw installation;

#### Finish

Black/White

#### Material

Aluminium



135mm  
5-25mm

#### TECHNICAL CHARACTERISTICS

##### Light source

Light source: Luminus CXM-14-30-90-36-AC32-F4-3

Output (W): 25.2W (700mA 36V)

Total power consumption (W): 30W

Color temperature: 2700K/3000K/4000K

CRI: 90

Photobiological risk: RG1

Real Lumen: 2518.5lm

Qty Leds: 1pc

Lm/Real W: 95.61lm

Life Time: 50.000h L80B20

MacAdam steps: 3

UGR: 14

##### Gear

This product is supplied without gear;

Recommended gear:

Osram OT FIT 30/220-240/700 CS

##### Luminaire

Downlight suitable for indoor area

crossing: No

Warranty: 5 Years

#### LIGHT DISTRIBUTION for 3000K Medium 36°

h(m)	E(lx)	Ø(m)
1	5240	Ø0.69
2	1310	Ø1.39
3	582.2	Ø2.08
4	327.5	Ø2.78
5	209.6	Ø3.47

The photograph may not match the reference exactly. Please read the product description to identify the finish.